

IT'S TIME FOR
SUPERIOR
COMFORT

Bliss
by Acteon



ACTEON

Bliss
by Acteon

Up to
61% of dentists and hygienists experience hand, wrist or arm pain. Dental practitioners ranked first in occupations affected by carpal tunnel syndrome (CTS)¹.



THE NEXT
GENERATION
OF MANUAL
INSTRUMENTS

PRECISE, HANDCRAFTED
SHARPNESS WITH AN
HEIR OF FRENCH CUTLERY

The working part of Bliss™ curettes and scalers offer an optimal hardness for sharp instruments and excellent edge retention. To reach this level of excellence, ACTEON follows the cutlery traditions of Thiers, the world capital of fine cutlery. ACTEON has integrated the ancestral cutlery and metallic expertise to develop high quality manual instrumentation. ACTEON has reached the perfect balance between craftsmanship, industrial techniques and technological innovation.



¹ - "The effects of periodontal curette handle weight and diameter on arm pain". D.Rempel; D.L.Lee; K.Dawson; P.Loomer. JADA 143(10) - October 2012



PROVEN ERGONOMIC DESIGN AND COMFORT

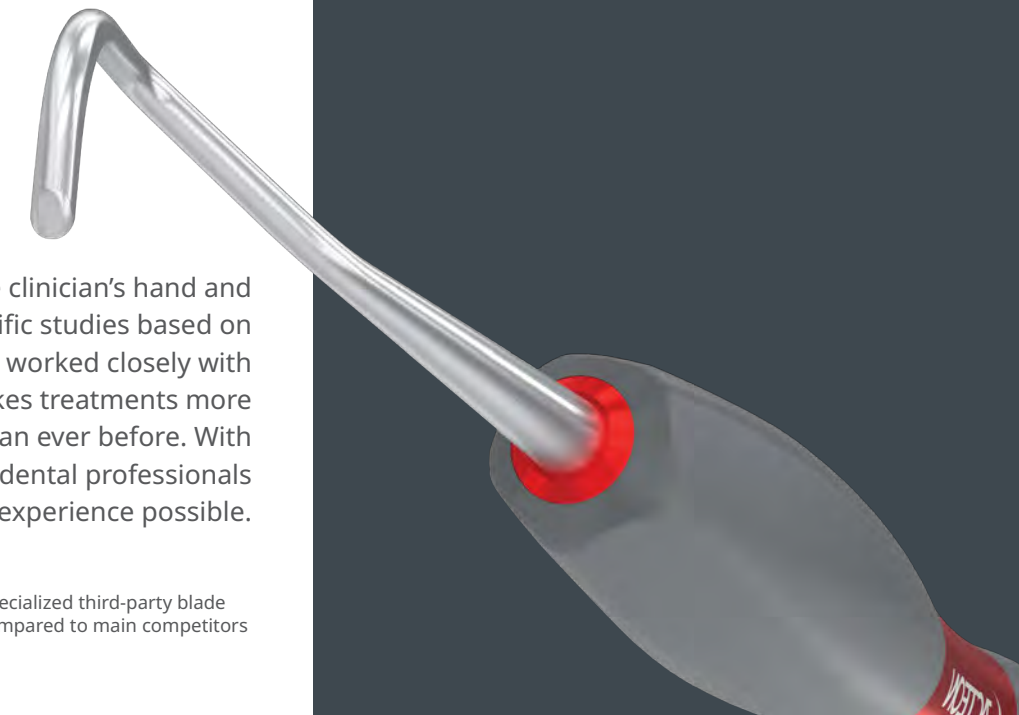
To find the perfect balance between the clinician's hand and the instrument, ACTEON used scientific studies based on dental instrument ergonomics. We also worked closely with clinicians to create a handle that makes treatments more comfortable, reliable and effective than ever before. With Bliss™, ACTEON exceeds expectations of dental professionals for the best treatment experience possible.

* CATRA study, Cutlery & Allied Research Association, a specialized third-party blade laboratory, to measure the sharpness of Bliss scalers compared to main competitors

LIGHTWEIGHT
15g

UNIQUE
BLISS GRIP
TECHNOLOGY

40%
SHARPER THAN
COMPETITORS*



REVOLUTIONARY COMFORT AT YOUR FINGERTIPS



BLISS GRIP TECHNOLOGY EVERY FEATURE MATTERS



15g

ULTRA LIGHTWEIGHT

SOFT & FIRM GRASP



- Effective silicone grip surface
- No spring effect, no slip surface

BETTER ERGONOMICS



- Handle with flat edges makes instruments easy to roll
- High tactile sensitivity

REDUCTION OF HAND FATIGUE¹



- Optimum diameter of the handle for pinching force reduction¹
- Lightweight: 15g among the lightest instrument on the market

100% APPROVED
BY
PRACTITIONERS²

LESS
pinch
force

LESS
muscle
load

SUPERIOR COMFORT

"The large grip provides increased comfort, quick adaptation, easy rotation and reduced hand fatigue"

Karen VICHOS, RDH, USA



¹ -The effects of periodontal instrument handle on hand muscle load and pinch force, D. Rempel; D. Lee; K. Dawson; P. Loomer; JADA 143 (10) - October 2012
² - Internal field evaluation on 20 practitioners from 8 different countries. 100% answered that Bliss handle was comfortable.

EXCEPTIONAL PRECISION & QUALITY

SUPERIOR
SHARP
EDGES

SURGICAL
GRADE
STEEL

LONG
LASTING
SHARPNESS

HIGH LEVEL OF EXPERTISE

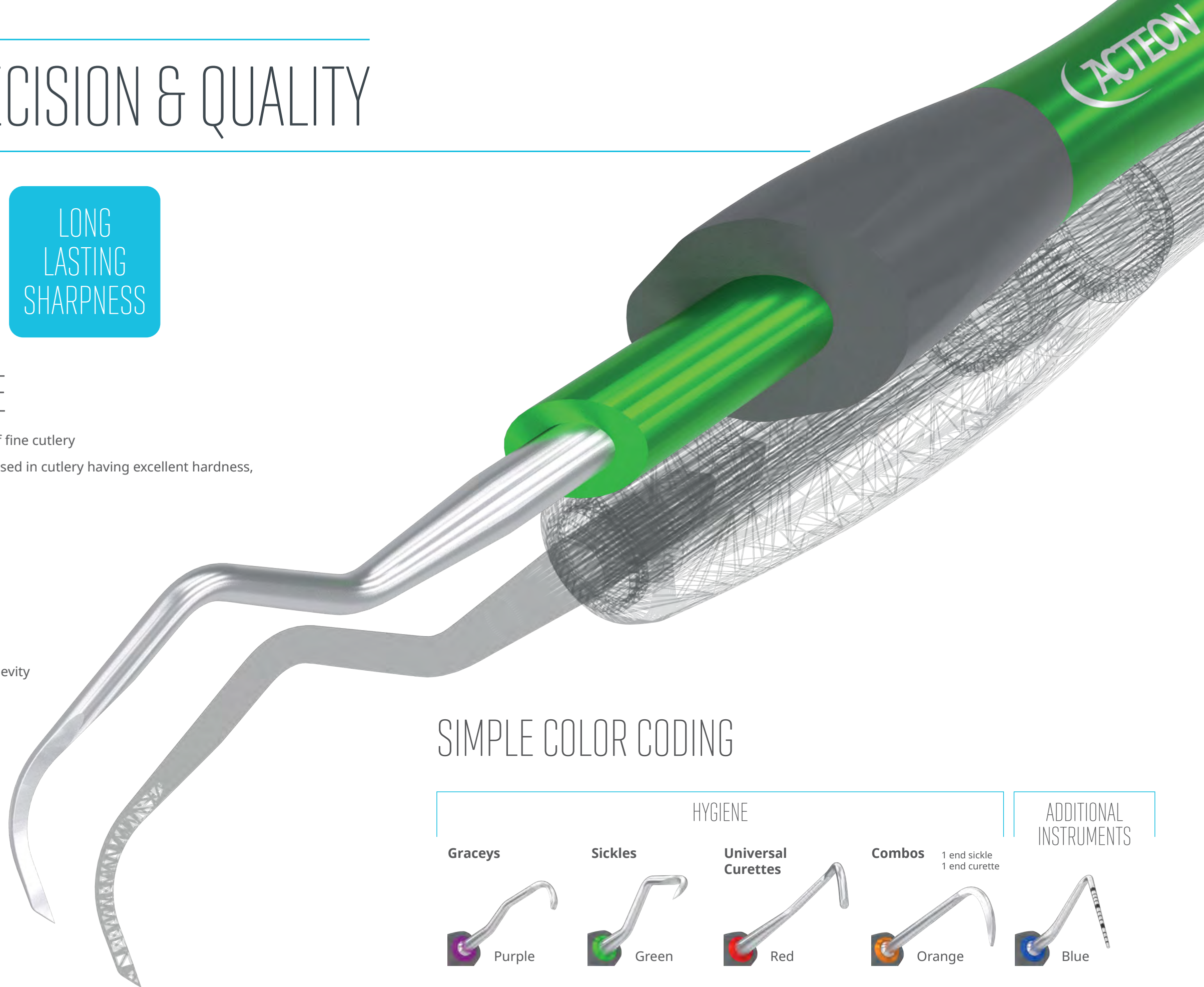
- ▶ Manufactured in Thiers, France, the world capital of fine cutlery
- ▶ Premium, surgical grade stainless steel, the same used in cutlery having excellent hardness, wear and corrosion resistance
- ▶ Hand-sharpened by well-trained artisan craftsmen

ADVANCED HARDNESS AND STURDINESS

- ▶ Advanced treatments applied for strength and longevity
- ▶ Resistant to wear
- ▶ Lasting sharpness

ENHANCED COMFORT ACHIEVED

- ▶ Extreme sharpness requires less force
- ▶ Less force means less muscle fatigue
- ▶ Less force means comfortable scaling



SIMPLE COLOR CODING

HYGIENE

Instrument Type	Color
Graceys	Purple
Sickles	Green
Universal Curettes	Red
Combos (1 end sickle, 1 end curette)	Orange
Additional Instruments	Blue

GRACEY CURETTES

FEEL THE DIFFERENCE...

Based on the original standards of Gracey curette designs, ACTEON worked closely with dental hygienists to design the shanks and working ends of each instrument to maximize their performance and efficiency.



Gracey 1-2
(Ref. 402.01SI)



Gracey 5-6
(Ref. 402.05SI)



Gracey 11-12
(Ref. 402.11SI)



Gracey 13-14
(Ref. 402.13SI)



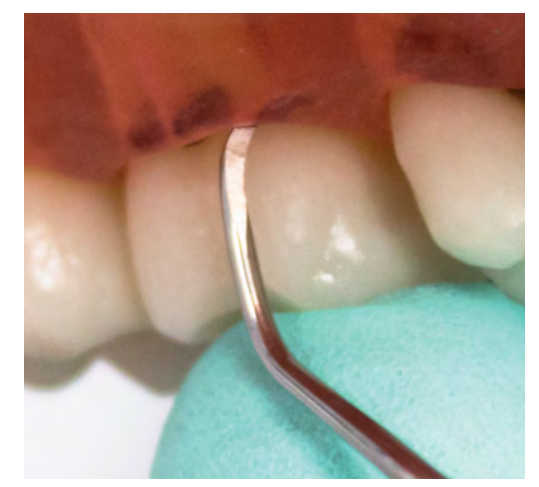
Gracey 15-16
(Ref. 402.15SI)



Gracey 17-18
(Ref. 402.17SI)



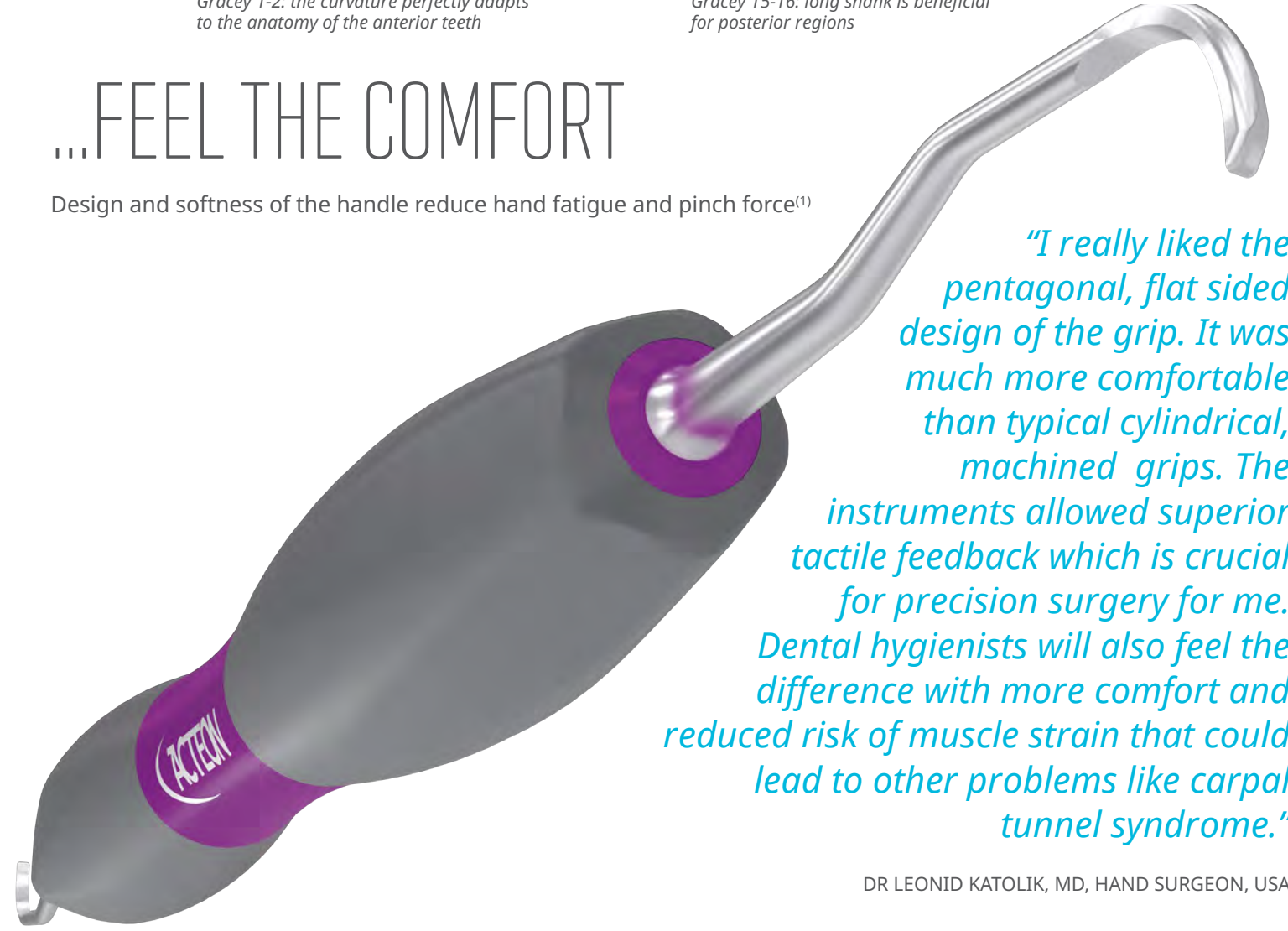
Gracey 1-2: the curvature perfectly adapts to the anatomy of the anterior teeth



Gracey 15-16: long shank is beneficial for posterior regions

...FEEL THE COMFORT

Design and softness of the handle reduce hand fatigue and pinch force⁽¹⁾



"I really liked the pentagonal, flat sided design of the grip. It was much more comfortable than typical cylindrical, machined grips. The instruments allowed superior tactile feedback which is crucial for precision surgery for me. Dental hygienists will also feel the difference with more comfort and reduced risk of muscle strain that could lead to other problems like carpal tunnel syndrome."

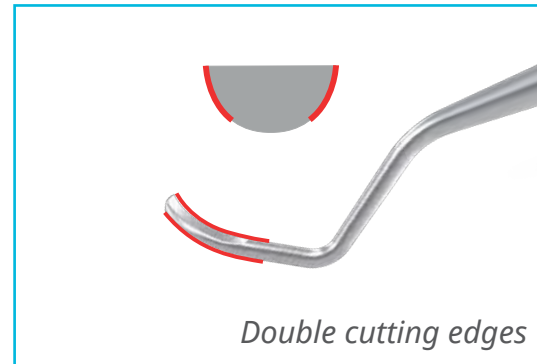
DR LEONID KATOLIK, MD, HAND SURGEON, USA

(1) "The effects of periodontal curette handle weight and diameter on arm pain". D.Rempel; D L.Lee; K.Dawson; P.Loomer. JADA 143(10) – October 2012

UNIVERSAL CURETTES

YOU DESERVE
THE BEST COMFORT...

Bliss grip technology revolutionizes ergonomics.



BARNHART 5-6
(Ref. 408.05SI)



COLUMBIA 4L-4R
(Ref. 405.04SI)



COLUMBIA 13-14
(Ref. 405.13SI)

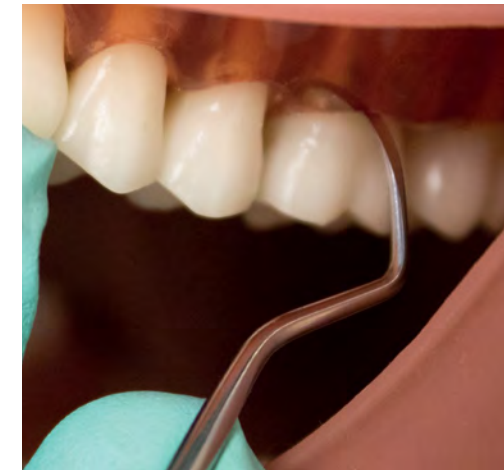


LANGER 5-6
(Ref. 406.06SI)



*"I have been a practicing clinician for over 30 years.
Using ACTEON scalers has made my job as a hygienist fun again."*

RoseAnn GARNELLO, RDH, USA



*Barnhart 5-6: Perfect angulation and working end
for posteriors and mesial surfaces*



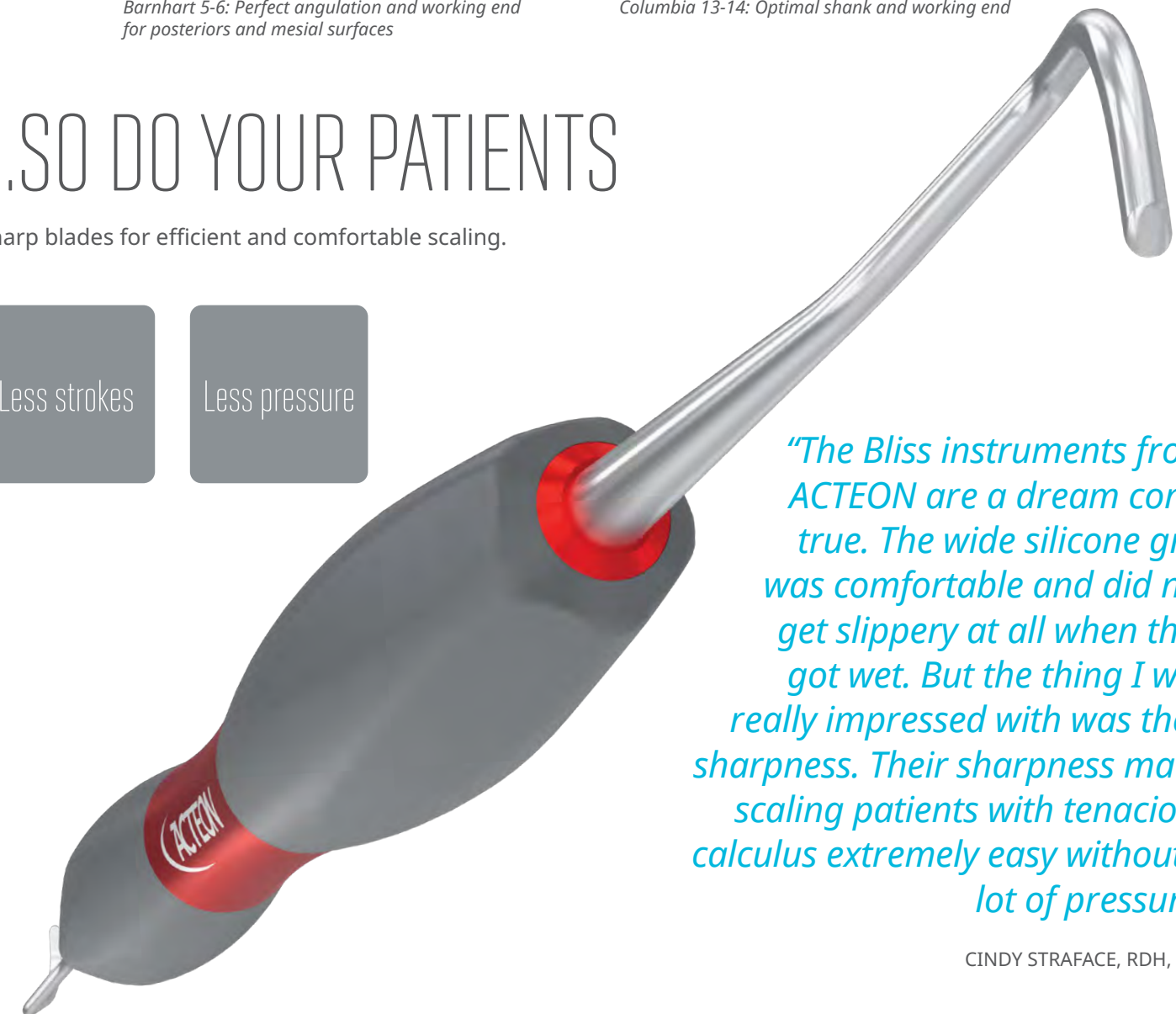
Columbia 13-14: Optimal shank and working end

...SO DO YOUR PATIENTS

Sharp blades for efficient and comfortable scaling.

Less strokes

Less pressure



*"The Bliss instruments from
ACTEON are a dream come
true. The wide silicone grip
was comfortable and did not
get slippery at all when they
got wet. But the thing I was
really impressed with was their
sharpness. Their sharpness made
scaling patients with tenacious
calculus extremely easy without a
lot of pressure"*

CINDY STRAFACE, RDH, USA

SICKLES



ACCESS TO TIGHT INTERPROXIMAL SURFACES

Bliss sickle scalers are designed to deliver interproximal access for anterior and posterior teeth. The thinner terminal end of the blade increases access in hard to reach areas.



“With the M23 scaler, I decreased hand instrumentation time with patients”

Karen VICHOS, RDH, USA



M23: Effective in posterior to due to contra-angle bend and thin blade

COMBOS

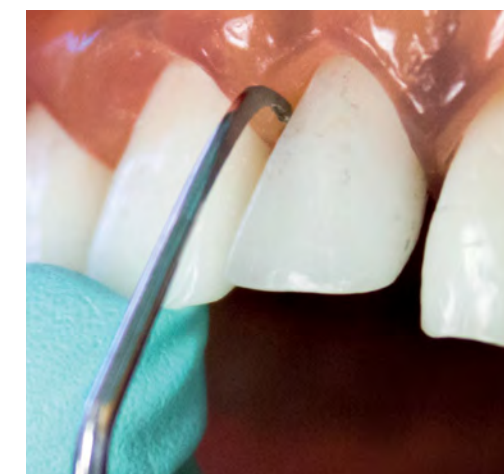


DOUBLE EFFICIENCY DOUBLE PERFORMANCE

Find the benefit of a thin sickle scaler and a universal Langer 5 curette.



The mini version is dedicated for tight areas and better interproximal access.



H5-L5: Easy to place and to adapt especially on all anteriors

COMFORT AVAILABLE FOR DENTAL PROCEDURES



DIAGNOSTICS

EXPLORERS



11-12
(Ref. 263.06SI)

17-23
(Ref. 263.07SI)

RESTORATION

EXCAVATORS & BURNISHERS



36-35
(Ref. 165.01SI)

38-37
(Ref. 165.02SI)

91
(Ref. 165.03SI)

125
(Ref. 108.14SI)

RESTORATION

COMPOSITE INSTRUMENTS



ø 1.1mm

ø 2.0mm

L 4mm

L 4mm

w 1.8mm
(Ref. 194.12SI)

w 2.0mm
(Ref. 194.13SI)

L 5.4mm
(Ref. 194.14SI)

L 5.6mm
(Ref. 194.15SI)

L 1.6mm
(Ref. 194.16SI)

L 1.6mm
(Ref. 192.05SI)



MIRROR HANDLE*
(Ref. 212.00SI) (CSS)

*Mirror sold separately

RESTORATION

CEMENT & WAX SPATULAS



20mm
(Ref. 246.05SI)

25mm
(Ref. 246.09SI)

50mm
(Ref. 246.24SI)

PERIODONTICS

EXPROS - EXPLORER/PROBE COMBO



UNC12
1 to 12mm
(Ref. 418.06SI)

CP12
3-6-9-12mm
(Ref. 418.07SI)

UNC15
1 to 15mm
(Ref. 418.08SI)

CP15
3-6-9-12-15mm
(Ref. 418.09SI)

MOST POPULAR
#23
EXPLORER

ENDODONTICS

ROOT CANAL PLUGGERS



MACHTOU 1-1
(Ref. 419.01SI)

MACHTOU 1-2
(Ref. 419.02SI)

MACHTOU 2-3
(Ref. 419.03SI)

MACHTOU 2-4
(Ref. 419.04SI)

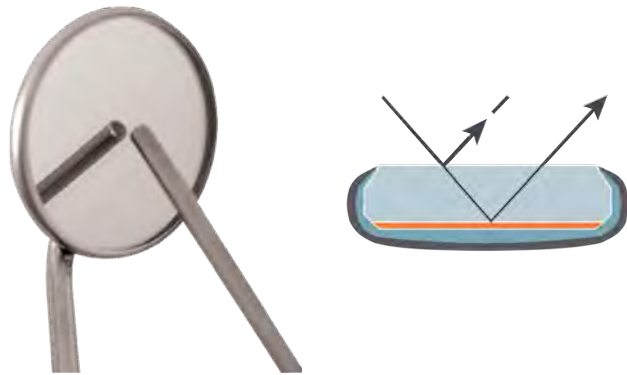
ACTEON[®] MOUTH MIRRORS

Mouth mirrors are used for indirect vision in the oral cavity. The mounting is entirely in stainless steel. A silicone chip is put between the glass and the metallic mounting to make the mirror watertight.

THE COATING

BACK SURFACE

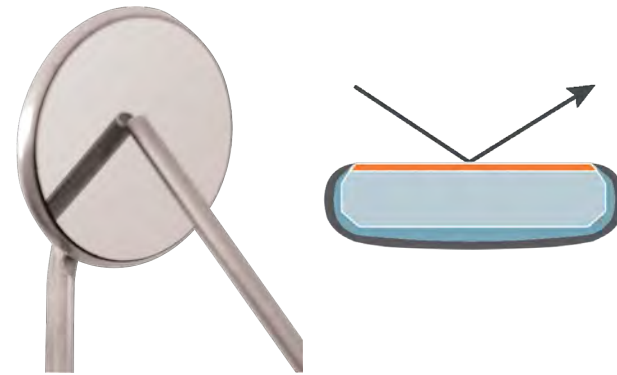
Coating: Aluminium



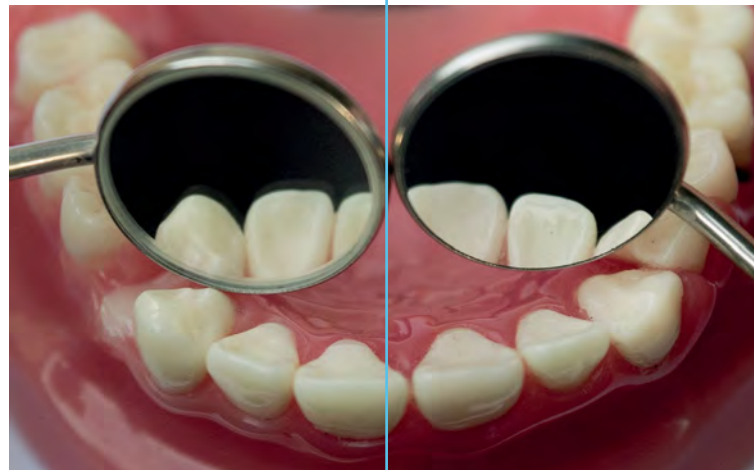
- ▶ Space between the object and the image because of the thickness of the glass
- ▶ Economical
- ▶ Less accurate because of the double image effect
- ▶ Blurry image because of double reflection

FRONT SURFACE

Coating: Pure Reflect[®]

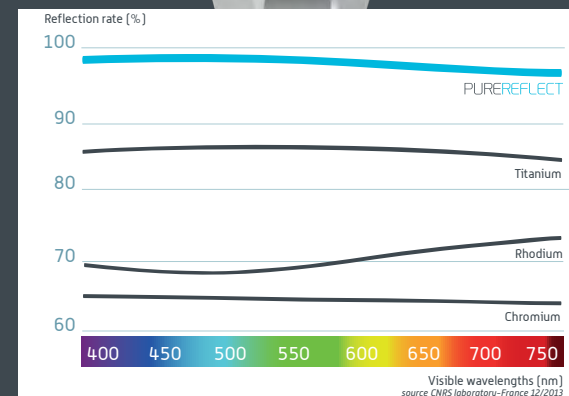
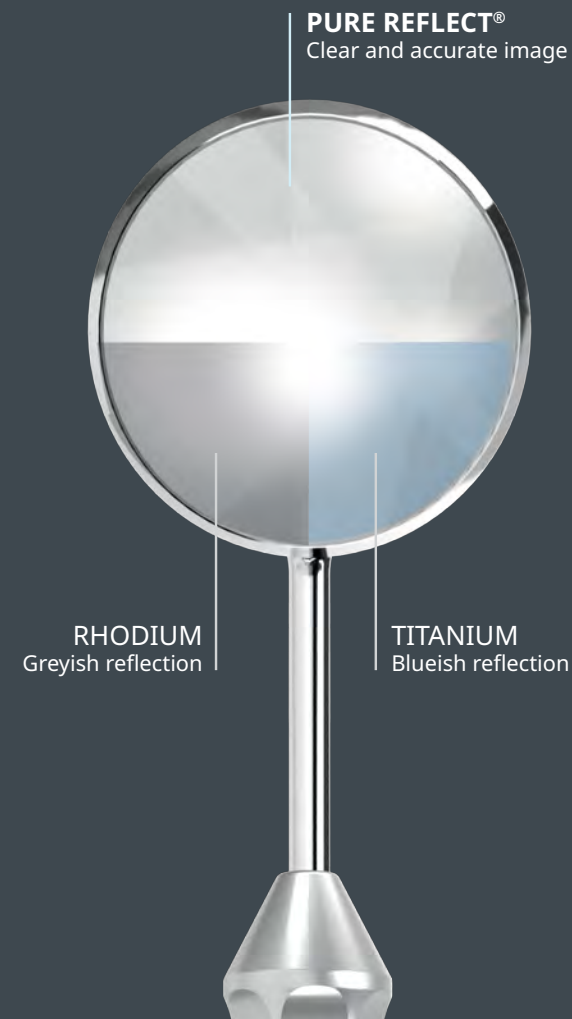


- ▶ No space between the object and the image. The reflective coating is deposited on the glass
- ▶ Clean and precise image
- ▶ Color alteration of TI and RH coatings



COLOR ACCURACY

Comparison between



CHARACTERISTICS

THE FACES

Single-sided



THE STEM

Cone Socket Stem (CSS)



THE SIZES



Most popular sizes are 4 size (Ø 22mm) and 5 size (Ø 24mm)

CASSETTES

EASY CLIP CASSETTE

8 instruments
Dimensions: 180x136x30mm
Material: PSU
Handy and light (90 g)
Sterilizable up to 180° C



Easy Clip
Cassette
Ref. 233.30



LARGE STAINLESS STEEL CASSETTE

Sterilization cassette stainless steel 16
instruments
Dimensions: 285x92x37mm
Material: stainless steel
Yellow silicone + 2 metallic clips
Sterilizable up to 180° C



Cassette
Ref. 233.20

Example of presentation
Instruments are not included

PROPHYLAXIS KIT BLISS

- 233.30** Easy clip cassette
- 212.00SI** Mirror handle CSS with one #5 Pure Reflect mirror
- 418.06SI** UNC12 - perio probe 1-12mm and explorer #23
- 404.23SI** M23 - Sickle scaler
- 402.11SI** Gracey curette 11-12
- 402.13SI** Gracey curette 13-14
- 406.07SI** H6-H7 - Scaler
- 405.13SI** Columbia curette 13-14

www.acteongroup.com

Bliss
by Acteon

Class I professional dental medical devices - ISO 13485.
Read instructions provided with the products.
Not reimbursed by health insurance organizations.
Manufacturer: PRODONT HOLLIGER (France)

ACTEON North America
124 Gaither Drive | Suite 140
Mount Laurel | NJ 08054 | USA
Tel. 1-800-289-6367 | Fax. 888-964-3548
www.acteongroup.com | info@acteonusa.com



1/19/21